

# Bentley

## Collection 2023





# Contents

<b>We are Bentley Europe</b>	4
<b>Milestones</b>	6
<b>Global environment</b>	8
<b>Customised</b>	10
<b>Wardrobe</b>	12
– Ironing solutions	14
– Ironing boards	16
– Irons	20
– Specifications ironing boards	23
– Luggage racks	24
<b>Bedroom</b>	26
– Rollaway beds	28
– Audio clocks & chargers	30
<b>Living</b>	32
– Kettles	34
– Welcome trays	37
– Specifications welcome trays	40
– Tissue boxes	46
– Accessories	47
<b>Bathroom</b>	50
– Scales	52
– Hair dryers	54
<b>Desk</b>	56
– Accessories	58
– Note pads	59
– Waste bins	60
<b>Collections</b>	62
– New Classic collection	64
– Natural collection	66
– Mix & Match collection	68

we think of ——— everything



CONNECTING

# We are Bentley Europe...

A supplier of innovative, sustainable and qualitative functional in-room products for the hotel industry. We know, from 35 years of experience, that every user friendly and surprising detail we add, makes a world of difference. We are known for our thoughtful service and the fact that we are always one step ahead. With our honest and accommodating approach we want to reach the hearts and heads of our clients and their guests.



# Bentley Milestones

**1974** ESTABLISHED AS A TRADING COMPANY FOR WOODEN FURNITURE

**1985** START IN THE HOTEL INDUSTRY BY PRODUCING TROUSER PRESSES

**2000** START PRODUCTION IRONING CENTRES AND MORE HOTEL PRODUCTS

**2008** WORLD'S FIRST WOODEN WELCOME TRAY

**2010** WORLD'S FIRST 0,5 L KETTLE FOR THE HOTEL INDUSTRY

**2013** WORLD'S FIRST HOTEL HAIR DRYER WITH RETRACTABLE CORD

**2017** WORLD'S FIRST BATTERY-FREE DIGITAL HOTEL SCALE

**2018** BENTLEY LAUNCHED ITS ECONOMICAL BRAND MOOR

**2021** LAUNCH OF A COMPLETE NEW LEATHERETTE DESIGN COLLECTION

**2021** PLANTED 300 TREES FOR THE PROJECT 'TREES FOR ALL'

**2022** INTRODUCTION OF ECO FRIENDLY PACKAGING LINE

**2022** PARTNERSHIP WITH RONALD MCDONALD HOUSE CHARITIES THE NETHERLANDS

**2022** PLANTED 1000 TREES FOR THE PROJECT 'TREES FOR ALL'



**120**  
COUNTRIES

**2.700**  
CUSTOMERS

**3**  
YEARS OF WARRANTY ON ALL BENTLEY PRODUCTS

**115**  
IN HOUSE DESIGNED PRODUCTS

**25**  
WOODEN PRODUCTS, ALL WITH FSC CERTIFICATION

**120**  
ITEMS ON STOCK

**1.000**  
PALLETES AVERAGE ON STOCK



## CORPORATE SOCIAL RESPONSIBILITY

One of the main challenges of our era is to find the right balance between people's well-being and the vitality of our planet.

We believe that every enterprise has its own responsibility to deal with this challenge in a responsible way. We want to achieve our economic goals, whilst considering the effect of our actions on people and planet.

We aim to work with recycled raw materials in the development of our products and use the most sustainable packaging available. Throughout the supply chain we try to reduce our environmental impact as much as possible, by for instance sourcing closer to home.

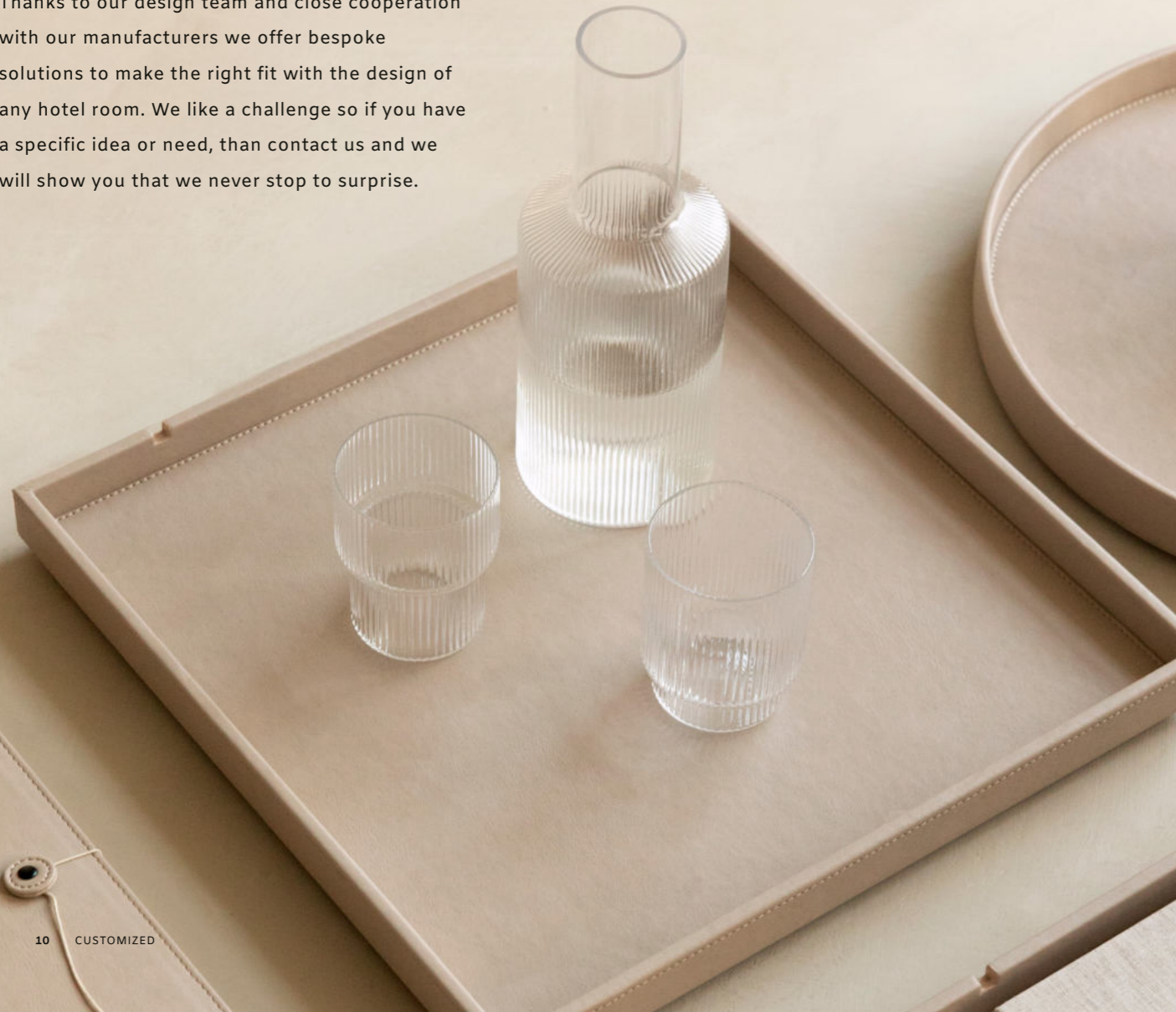
When executing our business, we want to minimize our impact on the environment and reduce the footprint we leave behind as much as possible. On top of our day to day business decisions we are proud partners of Trees for All and Ronald McDonald House Charities and support them 100% for what they stand for and what they have achieved.



WHAT WE OFFER

## CUSTOMIZED

In addition to our extensive range we offer the option to customize our items to your needs. Thanks to our design team and close cooperation with our manufacturers we offer bespoke solutions to make the right fit with the design of any hotel room. We like a challenge so if you have a specific idea or need, than contact us and we will show you that we never stop to surprise.



## Four steps to your customized product

We offer endless bespoke solutions. Our wooden welcome trays can be ordered in any color you like and our leatherette collection can be completely customized in size, shape and color. We can even supply metal luggage racks in all kinds of sizes and finishes like champagne, silver and bronze. And the best of it all, you can already customize your item starting at 50 pieces. Customizing has never been so easy, just follow the steps below;

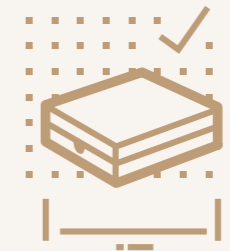
1

Share your design & specifications with us



2

You will receive a technical drawing for your approval



3

Sample will be on your desk within 3 weeks



4

Production time is 60 days excluding shipment



## WARDROBE



ironing boards  
ironing organisers  
irons  
luggage racks



A functional wardrobe is essential in every hotel room. It facilitates a hotel guest to store clothing and shoes and at the same time it is the place for a hotel to offer extra services to contribute to the guest experience. Our ironing solutions are specifically developed to save space and to fit in any possible wardrobe.





## Ironing solutions

We provide several ironing systems which contain a board, an organiser and an iron. Depending on your wishes you can mix and match and make the in-room ironing solution, which fits your needs. Due to our own developed organisers all sets are space saving and easy in use.



WALL MOUNTED



Board and iron wall organizer. Universal solution to hang the board and the iron on the wall.

ORGANISER AT TOP



Board and iron organizer to hang on the rod in the wardrobe, enables to use the whole board for ironing.

ORGANISER AT BOTTOM



Board and iron organizer in one to hang on rod in wardrobe, for maximum space saving.



## IRONING BOARDS

### Ocean

#### most compact ironing board

- extra compact mesh frame board, uncompromising ironing comfort
- solid matte black legs
- only 110 cm height when stored in the wardrobe
- logical unfolding / folding mechanism
- easy to use and easy to store
- available with integrated hanger/holder or separate organiser
- the additional organisers fits all Bentley irons

#### DIMENSIONS

FOLDED: 40 X 8,5 X 102 CM (W X D X H)  
IRONING SURFACE: 100 X 40 CM (W X D)

#### ITEM NUMBER

**3546**

#### ADD-ONS

ORGANISER AT TOP (**3553N**)  
ORGANISER AT BOTTOM (**3583**)  
HOOK FLAT (**3542**)  
WALL-MOUNTED LASER ORGANISER (**3562N**)



### Swirl+

#### compact ironing board

- compact mesh frame board
- fits into small areas
- adjustable in height
- extra thick matte black metal legs
- easy to use and flexible to store in the wardrobe
- cable can be connected to the board (anti-theft feature)
- available with integrated hanger/holder or separate organiser
- the additional organisers fits with all Bentley irons

#### DIMENSIONS

FOLDED: 37 X 7,5 X 117 CM (W X D X H)  
IRONING SURFACE: 112 X 37 CM (W X D)

#### ITEM NUMBER

**3518N (MATT BLACK)**

#### ADD-ONS

SWIRL ORGANISER AT TOP (**3556N**)  
ORGANISER AT BOTTOM (**3557N**)  
HOOK FLAT (**3534**)  
WALL-MOUNTED LASER ORGANISER (**3562N**)



# Indigo

## full-size mesh frame ironing board

- large comfortable ironing surface, full-size board
- all-round user friendly, logical unfolding/ folding mechanism
- board is adjustable in height
- solid steel matte black legs
- available with or without integrated hanger or separate organiser
- the additional organisers fits all Bentley irons

### DIMENSIONS

FOLDED: 42 X 7,5 X 134 CM (W X D X H)

IRONING SURFACE: 118 X 42 CM (W X D)

### ITEM NUMBER

**3581**

### ADD-ONS

INDIGO ORGANISER AT TOP (**3556-I**)

WALL-MOUNTED LASER ORGANISER (**3562N**)



# Laser

## compact and convenient iron wall organiser

- space saving, easy to fit and easy to use for housekeeping and guests
- directly mountable on almost every screwable surface
- fits all Bentley irons and ironing boards, thanks to the adjustable hooks
- can also be used as iron organiser only
- rubber inserts to prevent sliding
- made of durable and heat resistant plastic

### DIMENSIONS

14 X 2 X 21 CM (W X D X H)

### ITEM NUMBER

**3562N**

# Ironing board covers

## padded additional covers

- official replacements parts
- strong padded quality
- perfect fit
- quality stitching
- available for all Bentley & MOOR ironing centres
- supplied per set of 10 pieces

### DIMENSIONS

IRONING BOARD SIZES;

SWIRL+ 112 X 37 CM

OCEAN 100 X 40 CM

INDIGO 118 X 42 CM

### ITEM NUMBER

**3501** COVERS FOR SWIRL+ (DARK GREY)

**3548** COVERS FOR OCEAN (DARK GREY)

**3584** COVERS FOR INDIGO (DARK GREY)



## IRONS

### Dry iron

hotel safe iron with auto shut-off movement sensor

- safe auto shut-off after 30 seconds when unused and horizontal (8 minutes when vertical)
- non-stick Teflon soleplate
- red 'in use' indicator light
- compact comfortable grip
- temperature adjustment switch
- easy to use and clean, no water needed

DIMENSIONS

26,5 X 11 X 13 CM (W X D X H)

ITEM NUMBER

EU 3409 / UK 3411



### Steam iron

hotel safe iron with powerful steam functions

- safe auto shut-off after 30 seconds when unused and horizontal (8 minutes when vertical)
- scratch resistant nano ceramic soleplate
- red 'in use' indicator light
- powerful steam blast & spray function (70 g/min)
- large opening, to prevent water spillage, non-drip
- convenient cable bumper

DIMENSIONS

27 X 11,5 X 17 CM (W X D X H)

ITEM NUMBER

EU 3403H / UK 3402H



### Steam iron retractable

hotel steam iron with retractable cord

- safe auto shut-off after 30 seconds when unused and horizontal (8 minutes when vertical)
- scratch resistant nano ceramic soleplate
- red 'in use' indicator light
- powerful steam blast & spray function (70 g/min)
- large opening, to prevent water spillage, non-drip
- convenient cable bumper

DIMENSIONS

31 X 12 X 15 CM (W X D X H)

ITEM NUMBER

EU 3407 / UK 3405



Choose between three robust and powerful irons, all equipped with a safe auto shut-off system, available with EU or UK plug



## SPECIFICATIONS

# Ironing centres

Product name	Swirl+	Ocean	Indigo
Article number	3518N	3546	3581
Frame type	Metal mesh frame	Metal mesh frame	Metal mesh frame
Removable cover	(cotton dark grey)	(cotton dark grey)	(cotton dark grey)

### SIZES & WEIGHT (w x d x h)

Ironing height	82 cm	82 cm	85,5 cm
Adjustable height	●	-	●
Ironing surface	112 x 37 cm	100 x 40 cm	118 x 42 cm
Size folded	37 x 7,5 x 117 cm	40 x 8,5 x 102 cm	42 x 7,5 x 134 cm
Weight	4,5 kg	4,2 kg	5,3 kg

### OPTIONS

Integrated organisers: (all Bentley irons fit, unless otherwise mentioned)

Organiser at top	● (3556N)	● (3553N)	● (3556-I)
Organiser at bottom	● (3557N)	● (3583)	-
Hook flat	● (3534)	● (3542) **	-

Wall-mounted organisers:

Laser organiser	● (3562N)	● (3562N) *	● (3562N)
Wall bracket	● (3324) • **	-	-

• standard included \* only as separate iron organiser \*\* no iron storage

## LUGGAGE RACKS

### Sienna I

#### foldable wooden luggage rack

- five strong straps to carry sufficient weight
- less damage to the walls due to the design
- space saving model without backrest
- flat when folded
- European made / FSC certified wood
- available in two colours

#### DIMENSIONS

DIMENSIONS OPEN: (W X D X H)

60 X 63 X 53 CM

STRAP HEIGHT: 51 CM

DIMENSIONS FOLDED: (W X D X H)

60 X 11 X 80 CM

#### ITEM NUMBERS

**4486** MAHOGANY

**4488** BLACK



On request we also tailor-make our luggage racks to fit your specific needs.

### Sienna II

#### foldable wooden luggage rack with backrest

- five strong straps to carry sufficient weight
- less damage to the walls due to the design
- space saving model without backrest
- flat when folded
- European made / FSC certified wood
- available in two colours

#### DIMENSIONS

DIMENSIONS OPEN: (W X D X H)

60 X 63 X 59 CM

STRAP HEIGHT: 51 CM

DIMENSIONS FOLDED: (W X D X H)

60 X 11 X 84 CM

#### ITEM NUMBERS

**4487** MAHOGANY

**4489** BLACK



### Modena

#### robust foldable polished luggage rack

- strong polished stainless steel frame
- rectangular tube design
- five strong leatherette straps
- nylon seatbelt inside for maximum stability
- plastic feet cap floor protectors mounted

#### DIMENSIONS

FOLDED 52 X 9 X 76 CM (W X D X H)

OPEN 52 X 44 X 62 CM (W X D X H)

#### ITEM NUMBER

**4450** STAINLESS STEEL

**4508** BLACK



also available: **Modena black XL:**

extra wide design, with luxurious matt black finish

#### ITEM NUMBER

**4508XL**



### Lucca+

#### exclusive stainless steel luggage rack

- solid stainless steel frame
- backrest is free from the wall to avoid scratches
- four strong leatherette straps with nylon seatbelt
- flowing arched design
- colour adjustable on request

#### DIMENSIONS

DIMENSIONS OPEN:

50 X 15 X 75 CM (W X D X H)

STRAP HEIGHT: 42 CM

DIMENSIONS FOLDED:

50 X 42 X 60 CM (W X D X H)

#### ITEM NUMBERS

**4449N**

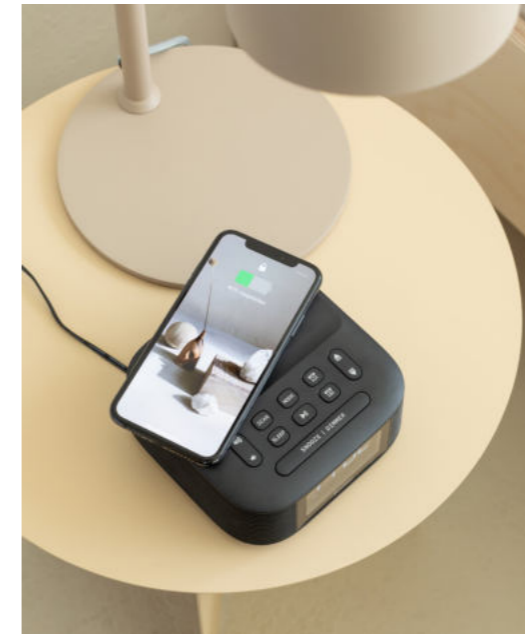
## BEDROOM



audio clocks & chargers  
baby cribs  
rollaway beds



The hotel bedroom is the place to relax and feel comfortable. We offer high-quality full size rollaway beds and foldable baby cribs with special attention to the quality off the mattress. Our bluetooth alarmclock with fully dimmable display and wireless charging enables a good night sleep and timely wake-up.



## ROLLAWAY BEDS



### Jade

#### rollaway upright extra bed

- 100% Dutch design, made in The Netherlands
- strong and durable powder coated steel frame
- space saving, because the beds are stored upright
- 4 beds on 1,5m<sup>2</sup> when stored, due to the design of headboard
- full-size bed with comfortable spring mattress 90 x 190 cm
- heavy duty wheels to prevent damage to the floor

DIMENSIONS  
FRAME 90 X 203 X 45 CM  
MATTRESS 90 X 190 X 23 CM  
ITEM NUMBERS  
**4455**



### Jade dust cover

#### hygienic dust cover

- strong durable quality
- easy and quick to mount
- protects against dust and dirt
- fits perfectly around the mattress

DIMENSIONS  
FITS PERFECTLY AROUND  
THE MATTRESS OF THE  
JADE UPRIGHT BED  
ITEM NUMBERS  
**4463**

### Verdi

#### rollaway folding extra bed

- 100% Dutch design, made in The Netherlands
- strong and durable powder coated steel frame
- largest extra bed available on the hotel market
- extra comfort & weight balance thanks to the base with 19 slats
- comfortable SG40 foam 10 cm mattress
- easy to fold and unfold due to the unique folding system
- heavy duty wheels to prevent damage to the floor

DIMENSIONS  
FOLDED 90 X 40 X 120 CM  
OPEN 90 X 210 X 45 CM  
MATTRESS 90 X 205 X 10 CM  
ITEM NUMBERS  
**4440**



### Verdi dust cover

#### hygienic dust cover

- strong durable quality
- easy and quick to mount
- protects against dust and dirt
- fits perfectly around the mattress

DIMENSIONS  
FITS PERFECTLY AROUND THE VERDI  
FOLDING EXTRA BED  
ITEM NUMBERS  
**4453**



## AUDIO CLOCKS & CHARGERS



### Molto remote

for Molto audio clock

- set the time of Molto clocks as easy as 1,2,3
  1. use the buttons to set date and time (for first use)
  2. point the remote at the clock and push button SYNC
  3. in seconds of time the correct date and time is displayed on the clock
- designed with housekeeping in mind
- ideal to change time and change from summer to wintertime and back

DIMENSIONS  
13 X 9 X 3,5 CM (W X D X H)  
ITEM NUMBER  
4710



### Molto

hotel audio speaker with qi charging, usb and bluetooth

- built-in Bluetooth wireless music player
- FM-radio (listen & alarm function)
- wireless Qi charger at the top (fast 10 W)
- USB port at the backside (1 A)
- multi-level dimmable 2,5 inch LCD screen
- backup clock memory (1x CR2032 battery, excl.)
- built-in clock, dual alarm and snooze function

DIMENSIONS  
13,8 X 13,8 X 6 CM (W X D X H)  
ITEM NUMBERS  
EU 4703 / UK 4704

## BABY CRIBS

### Limea

safe foldable wooden baby crib

- made of durable and strong hardwood
- base and mattress stored inside the crib when folded
- including 7,5 cm foam fire retardant mattress
- including dust cover for clean storage
- double width heavy duty swivel casters

DIMENSIONS  
OPEN: 101 X 67 X 102 CM (W X D X H)  
FOLDED: 101 X 24 X 102 CM (W X D X H)  
MATTRESS: 96 X 60 X 7,5 CM (W X D X H)

ITEM NUMBER  
4465 NATURAL  
4466 MAHOGANY  
4471 BLACK





## LIVING



kettles  
welcome trays  
tissue boxes  
accessories



BENTLEY PRODUCTS ARE  
DESIGNED WITH THE IDEA  
OF BEING ABLE TO COMBINE  
WELL WITH EACH OTHER



A hotel room is more than just a place to have a good sleep, it is also your home away from home. Our wide range of living accessories make this possible. In order to enjoy a good coffee or tea we provide high quality kettles together with practical and well designed welcome trays and inlays in all kinds of sizes and materials. For cold drinks we offer ice buckets and coasters for an elegant presentation. And if you spill your drink there is no reason to worry, because our tissueboxes are always within reach.



## KETTLES



### Halo

0,6 litre compact double wall kettle

- 1000 W (230 V, 50/60 Hz)
- double wall, stainless steel inside
- auto steam shut-off, boil dry protection
- blue LED indicator light around the body
- matt black

DIMENSIONS

TOP DIAMETER Ø 12 CM  
SIZE OF BASE Ø 12,4 CM  
OVERALL HEIGHT 17 CM

ITEM NUMBERS

EU 4243 / UK 4244

### Halo

0,8 litre compact stainless steel kettle

- 1200 W (230 V, 50/60 Hz)
- stainless steel body
- auto steam shut-off, boil dry protection
- blue LED indicator light around the body

DIMENSIONS

TOP DIAMETER Ø 12 CM  
SIZE OF BASE Ø 12,4 CM  
OVERALL HEIGHT 17 CM

ITEM NUMBERS

EU 4250 / UK 4251



extra large opening lid



### Crimson

glass kettle 1 litre

- 1 litre capacity, 1850 - 2200 W
- blue LED 'in use' indicator light around
- elegant glass body, easy to clean
- concealed heating element
- auto steam shut-off, boil dry protection
- water level indicator / water filter in spout
- 360° rotatable, Strix controller

DIMENSIONS

TOP DIAMETER Ø 13 CM (OPENING 10 CM)  
SIZE OF BASE Ø 14 CM  
OVERALL HEIGHT 19 CM

ITEM NUMBER

EU 4240 / UK 4241



### Coral

compact kettle 0,5 litre

- 0,5 litre capacity, 800 W
- concealed heating element, easy to clean
- auto steam shut-off, boil dry protection
- red 'in use' indicator light in the handle
- water filter in spout
- 360° rotatable, Strix controller
- brushed stainless steel or matt black design

DIMENSIONS

TOP DIAMETER Ø 8 CM  
SIZE OF BASE Ø 14 CM  
OVERALL HEIGHT 19 CM

ITEM NUMBER

EU 4086 / UK 4087 (STAINLESS STEEL)  
EU 4146 / UK 4147 (MATT BLACK)





## Saffron view

**brushed stainless steel or matt black kettle 1 litre**

- concealed heating element, easy to clean
- auto steam shut-off, boil dry protection
- red 'in use' indicator light in the handle
- water level indicator / water filter in spout
- 360° rotatable, Strix controller
- luxury brushed stainless steel or matt black finish

DIMENSIONS  
TOP DIAMETER Ø 9 CM  
SIZE OF BASE Ø 14,5 CM  
OVERALL HEIGHT 21,5 CM

ITEM NUMBERS  
EU **4069** / UK **4067** (STAINLESS STEEL)  
EU **4260** / UK **4261** (MATT BLACK)

## Xanthic mug

**strong stoneware mug**

- strong quality stoneware
- food and dishwasher safe
- luxury black outside and white inside
- 150 ml capacity

DIMENSIONS  
WATER CAPACITY 150 ML  
WEIGHT 170 GR  
Ø 7 CM DIAMETER  
9 CM HEIGHT  
ITEM NUMBER  
**4080N**



## Canella mug

**luxurious compact mug**

- made of strong melamine
- food and dishwasher safe
- luxury black colour
- fits neatly with the Canella tray
- 150 ml capacity

DIMENSIONS  
Ø 7 CM DIAMETER  
9 CM HEIGHT  
WATER CAPACITY 150 ML  
WEIGHT 100 GR  
ITEM NUMBER  
**4161N**



## WELCOME TRAYS

### Xanthic small

**Dutch designed stylish wooden welcome tray**

- compact welcome tray made of beech wood
- anti-theft: cable can be fixed to the base of the tray
- integrated space for the kettle base
- 2 indentations for sachets and spoons
- easy to clean due to rounded corners
- strong lacquer to minimize scratches and stains

DIMENSIONS  
42 X 20 X 4 CM (W X D X H)  
OVERALL HEIGHT WITH CORAL KETTLE: 22 CM  
ITEM NUMBER  
**4115P** (MAHOGANY)  
**4150P** (BLACK)



### Xanthic

**Dutch designed stylish wooden welcome tray**

- made of durable beech wood
- anti-theft: cable can be fixed to the base of the tray
- integrated space for the kettle base
- 4 indentations for sachets and spoons
- easy to clean due to rounded corners
- strong lacquer to minimize scratches and stains

DIMENSIONS  
50 X 20 X 4 CM (W X D X H)  
OVERALL HEIGHT:  
INCL. SAFFRON VIEW  
KETTLE: 24,5 CM  
OVERALL HEIGHT:  
INCL. CORAL KETTLE: 22 CM

ITEM NUMBER  
**4072P** (MAHOGANY)  
**4085P** (BLACK)

## Xanthic coffee & tea

Dutch designed stylish wooden welcome tray

- large welcome tray made of beech wood
- anti-theft: cable can be fixed to the base of the tray
- integrated space for the kettle base
- Dutch design with straight corners
- 3 recesses for sachets and spoons
- 6 recesses for Nespresso® cups
- strong lacquer to minimize scratches and stains

DIMENSIONS  
42 X 31,5 X 4 CM (W X D X H)  
OVERALL HEIGHT WITH  
CRIMSON KETTLE: 22 CM

ITEM NUMBERS  
**4135P** (MAHOGANY)  
**4152** (BLACK)

Our welcome trays are available in various sizes and colours. On request we also tailor-make our trays to fit your specific needs.



## Orange

compact dutch-designed  
wooden welcome tray

- anti-theft: cable can be fixed to the base of the tray
- integrated space for the kettle base
- 4 recesses for sachets and spoons
- easy to clean due to the rounded corners
- strong lacquer to minimize scratches and stains
- available in stylish black, made of beech wood

DIMENSIONS  
24 X 24 X 4 CM (W X D X H)  
OVERALL HEIGHT WITH  
CORAL KETTLE: 22 CM

ITEM NUMBER  
**4215N**



## Canella

wooden welcome tray  
in mahogany and black

- space-saving beech wood welcome tray
- hygienic consumables drawer
- three compartments for ingredients
- drawer and cups made from food-safe melamine
- anti-theft: cable can be fixed to the base of the tray

DIMENSIONS  
25 X 17 X 5 CM (W X D X H)  
OVERALL HEIGHT WITH HALO KETTLE: 22 CM

ITEM NUMBER  
**4160** (MAHOGANY)  
**4595** (BLACK)

## SPECIFICATIONS

# Welcome trays

Product name	Canella	Orange
Article number	4160	4215
Size of the tray (w x d h)	25 x 17 x 5 cm	24 x 24 x 4 cm
Integrated kettle base		●
Indentions	3	1 + 3
Space for coffee machine	-	-
Space for cups /mugs	●	●
Anti-theft cable fixture	●	●
Certifications	FSC®	FSC®
Material	Beech / Melamine	Beech wood
Available colours (Other colours on request)	Mahogany / Black	Black
Bespoke possibilities	●	●
KETTLE OPTIONS:		
Halo all versions	●	●
Coral all versions	●	●
Crimson EU 4240 - UK 4241	●	●
Saffron view EU 4069 - UK 4067	●	●

Product name	Xanthic small	Xanthic	Xanthic Coffee&Tea
Article number	4115P	4072P	4135P
Size of the tray (w x d h)	42 x 20 x 4 cm	50 x 20 x 4 cm	42 x 31,5 x 4 cm
Integrated kettle base	●	●	●
Indentions	2	4	3 + 6
Space for coffee machine	-	-	●
Space for cups /mug	●	●	●
Anti-theft cable fixture	●	●	●
Certifications	FSC®	FSC®	FSC®
Material	Beech wood	Beech wood	Beech wood
Available colours (Other colours on request)	Mahogany / Black	Mahogany / Black	Mahogany / Black
Bespoke possibilities	●	●	●
KETTLE OPTIONS:			
Halo all versions	●	●	●
Coral all versions	●	●	●
Crimson EU 4240 - UK 4241	●	●	●
Saffron view EU 4069 - UK 4067	●	●	●

For more technical details view our technical product sheets.

Download these via [www.bentleyeurope.com](http://www.bentleyeurope.com) or contact us.



## Fuji

### welcome tray square

- luxurious classic brown or natural sand colour fabric and stitching
- elegant square design
- multi-functional tray for presenting coffee and tea equipment
- including 2 cable cut-outs for kettle or coffee machine
- water repellent and easy to clean

#### DIMENSIONS

38 X 38 X 3 CM (W X D X H)

#### ITEM NUMBERS

**6210** (NEW CLASSIC)

**6213** (NATURAL)



## Etna

### welcome tray rectangular

- luxurious classic brown or natural sand colour fabric and stitching
- elegant rectangular design
- ideal for presenting kettle and coffee and tea mugs and utensils
- including 2 cable cut-outs for kettle
- water repellent and easy to clean

#### DIMENSIONS

38 X 21 X 3 CM (W X D X H)

#### ITEM NUMBERS

**6211** (NEW CLASSIC)

**6214** (NATURAL)



## Maroa

### welcome tray round

- luxurious classic brown or natural sand colour fabric and stitching
- unique round design
- ideal for presenting kettle and coffee and tea mugs and utensils
- including cable cut-out for kettle or coffee machine
- water repellent and easy to clean

#### DIMENSIONS

38 X 38 X 3 CM (W X D X H)

#### ITEM NUMBER

**6212** (NEW CLASSIC)

**6215** (NATURAL)

## Stromboli

### welcome tray with drawer

- luxurious classic brown or natural sand colour fabric and stitching
- elegant and functional rectangular design
- including 2 cable cut-outs for kettle and coffee machine
- suitable to place capsule machine and kettle
- multi purpose drawer to store capsules, teabags and amenities

#### DIMENSIONS

31 X 38 X 8 CM (W X D X H)

#### ITEM NUMBER

**6228** (NEW CLASSIC)

**6229** (NATURAL)



# Ipala

## amenity tray rectangular

- elegant design with marble look
- 3 compartments to store capsules, teabags and sticks
- perfect for mix and match
- compact size
- water repellent and easy to clean

DIMENSIONS  
19,5 X 9 X 3 (W X D X H)  
ITEM NUMBER  
**6301**



# Ibu

## amenity tray round

- unique round design with marble look
- ideal for presenting coffee and tea supplies
- perfect for mix and match
- water repellent and easy to clean

DIMENSIONS  
13 X 13 X 3 (W X D X H)  
ITEM NUMBER  
**6302**



# Bromo

## condiment box

- luxurious classic brown or natural sand colour fabric and stitching
- 3 compartments to store capsules, teabags and sticks
- removable capsules divider
- functional with an elegant look
- water repellent and easy to clean

DIMENSIONS  
19 X 11,5 X 3 (W X D X H)  
ITEM NUMBER  
**6238 (NEW CLASSIC)**  
**6239 (NATURAL)**

# Yasur

## classic condiment box with lid

- luxurious classic brown or natural sand colour fabric and stitching
- removable divider for 6 capsules
- perfect to show and store your coffee supplies
- water repellent and easy to clean

DIMENSIONS  
17 X 17,5 X 5,5 (W X D X H)  
ITEM NUMBER  
**6240 (NEW CLASSIC)**  
**6241 (NATURAL)**



## TISSUE BOXES

### Kaba

#### tissue box rectangular

- luxurious classic brown or natural sand colour fabric and stitching
- suitable for most rectangular tissueboxes
- magnetic closing lid on the bottom
- ellipse opening
- water repellent and easy to clean

#### DIMENSIONS

25 X 13,5 X 8,5 CM (W X D X H)

#### ITEM NUMBER

6220 (NEW CLASSIC)

6211 (NATURAL)



### Manam

#### tissue box square

- luxurious classic brown or natural sand colour fabric and stitching
- suitable for most square tissueboxes
- magnetic closing lid on the bottom
- ellipse opening
- water repellent and easy to clean

#### DIMENSIONS

13,5 X 13,5 X 14 CM (W X D X H)

#### ITEM NUMBER

6222 (NEW CLASSIC)

6223 (NATURAL)

## ACCESSORIES

### Sindara

#### remote control holder

- luxurious classic brown or natural sand colour fabric and stitching
- unique and stylish design to present remote
- inner size 203 x 15 x 65 mm (w x h x d)
- 2-flap construction with leatherette belt
- water repellent and easy to clean

#### DIMENSIONS

24 X 8 X 4 CM (W X D X H)

#### ITEM NUMBER

6224 (NEW CLASSIC)

6225 (NATURAL)



### Utila

#### coaster

- luxurious classic brown or natural sand colour fabric and stitching
- suitable for any type of glass or cup
- to protect the service of trays and tables
- diameter 100 mm, Thickness 5 mm
- water repellent and easy to clean

#### DIMENSIONS

10 X 10 X 0,5 CM (W X D X H)

#### ITEM NUMBER

6226 (NEW CLASSIC)

6227 (NATURAL)



# Pacaya

## classic ice bucket

- luxurious classic brown or natural sand colour fabric and stitching
- perfect combination of stainless steel and high quality leatherette
- double walled bucket; keeps your ice cubes frozen
- including ice cube tong
- water repellent and easy to clean

### DIMENSIONS

13,5 X 13,5 X 15,5 (W X D X H)

### ITEM NUMBER

6236 (NEW CLASSIC)

6237 (NATURAL)



The double wall makes sure the ice cubes stay frozen for a long time



# BATHROOM



scales  
hair dryers



The bathroom is the place for personal care. By combining style and one-of-a-kind functionality in our bathroom products we contribute to the personal care experience. An example is the retractable cord on our hair dryers. Our Cindy scales are battery free, which is practical and friendly for the environment.

## SCALES

### Naomi

scale with less slippery surface

- less slippery surface when wet
- auto-on when you step on it
- equipped with high precision strain gauge sensors system
- battery cover with screw
- rounded edges on all sides
- minimum step-up height
- low battery indicator

DIMENSIONS

30 X 30 X 1,5 CM (W X D X H)

ITEM NUMBER

4499



### Cindy+

battery-free hotel scale

- environmental friendly due to battery-free function
- tap the button to generate power
- time-saving solution for housekeeping
- four high-precision sensors
- equipped with 6 mm safety glass
- select kg or lb
- max capacity 180 kg / 397 lb

DIMENSIONS

28 X 28 X 2,8 CM (W X D X H)

ITEM NUMBERS

4533N WHITE

4534N BLACK



## HAIR DRYERS



### Levante

hotel hair dryer with foldable grip and retractable cord

- safe 1750 – 2100 W hotel hair dryer with overheating protection
- robust retractable cord mechanism (160 cm)
- permanent ionisation function, protects and volumes the hair
- three temperature / heat settings and cold air button
- removable nozzle and air intake cap
- durable and strong matte black finish

DIMENSIONS  
27,5 X 9,5 X 28,5 CM (W X D X H) (INCL. NOZZLE)  
FOLDED 21,5 X 9,5 X 15 CM (W X D X H) (EXCL. NOZZLE)

ITEM NUMBERS  
EU 6065 / UK 6066

space saving folding mechanism



### Sirocco

hotel hair dryer with retractable cord

- safe 1750 – 2100 w hotel hair dryer with overheating protection
- strong retractable cord mechanism (185 cm cable)
- permanent ionisation function, protects and volumes the hair
- space saving, easy to store
- cold air button
- two air speed settings / three temperature settings
- removable nozzle and air intake cap, for easy cleaning
- durable and strong matte finish

DIMENSIONS  
22 X 8,5 X 22 CM (W X D X H) (EXCL. NOZZLE)

ITEM NUMBERS  
EU 6060N-I / UK 6061N-I



### Calima

hotel hair dryer

- overheating protection
- robust spiral cord
- slim styling nozzle for precise styling
- removable nozzle and filter cover
- ionisation function
- safe power 1600 - 1800 W

DIMENSIONS  
20 X 8,5 X 26 CM (W X D X H)

ITEM NUMBER  
EU 6078 / UK 6079

## Vane

wall holder hair dryer anti-theft

- made of strong black powder coated aluminium
- including anti-theft wire-hook
- rubber handle to protect hair dryers
- comes with 2 black screws
- suitable for all Bentley and MOOR hair dryers

DIMENSIONS  
8,1 X 9,5 X 7,2 CM (W X D X H)

ITEM NUMBER  
6077



## Calima

## Hair dryer bag

cotton bag, suitable for all our hair dryer models

- luxurious, strong quality
- protects the hair dryer while not in use
- fits all Bentley hair dryers
- two drawstrings to close the bag properly

DIMENSIONS  
32,5 X 32,5 CM (W X D)

ITEM NUMBER  
6062N



# DESK



accessories  
note pads  
waste bins



Productivity and organization are key words in the desk area. We offer desk pads, guest directories and waste bins so the business traveller has a fine place to work and the leisure traveller can find additional information.



## ACCESSORIES

### Vesuvius

#### desk pad

- luxurious classic brown or natural sand colour fabric and stitching
- including leatherette strap and messing screws
- helps to present stationary items in a proper way
- water repellant and easy to clean

#### DIMENSIONS

50 X 38 X 0,5 CM (W X D X H)

#### ITEM NUMBERS

6218 (NEW CLASSIC)

6219 (NATURAL)



### Krakatoa

#### guest directory

- luxurious classic brown or natural sand colour fabric and stitching
- suitable for A4 size paper
- including leatherette strap and 2 messing screws to fix the paper
- special designed 'corded-closing' mechanism
- water repellant and easy to clean

#### DIMENSIONS

35 X 25 X 4 CM (W X D X H)

#### ITEM NUMBERS

6216 (NEW CLASSIC)

6217 (NATURAL)

## NOTE PADS



### Augustine

#### note pad holder

- luxurious classic brown or natural sand colour fabric and stitching
- suitable for A6 size paper
- easy-fix system for notepad and pen
- water repellant and easy to clean

#### DIMENSIONS

16 X 17 X 0,5 (W X D X H)

#### ITEM NUMBER

6234 (NEW CLASSIC)

6235 (NATURAL)

Our newest leatherette accessory line is designed in two timeless colours which matches perfectly in any hotel room interior.

## WASTE BINS

### Butak

#### 10 l double wall waste bin

- luxurious classic brown or natural sand colour fabric and stitching
- double wall bin for hygienic storage bag
- chrome ring on top
- rubber floor protector ring at the bottom
- water repellent and easy to clean

#### DIMENSIONS

23 X 23 X 27 CM (W X D X H)

#### ITEM NUMBER

**6230** (NEW CLASSIC)

**6231** (NATURAL)



### Butak inlay

#### inlay bin for waste separation

- inlay fits in every Butak bin
- made out of recycled plastic
- a capacity of 6 liters
- easy to add
- water repellent and easy to clean

#### DIMENSIONS

26 X 23 X 11,5 CM

(W X D X H)

#### ITEM NUMBER

**6305**



### Palma

#### bin with waste separation

- luxurious black or classic brown colour fabric and stitching
- with 2 compartments for waste separation, each 6 liters
- functional with an elegant look
- water repellent and easy to clean

#### DIMENSIONS

23 X 23 X 30 (W X D X H)

#### ITEM NUMBER

**6232** (BLACK)

**6233** (NEW CLASSIC)



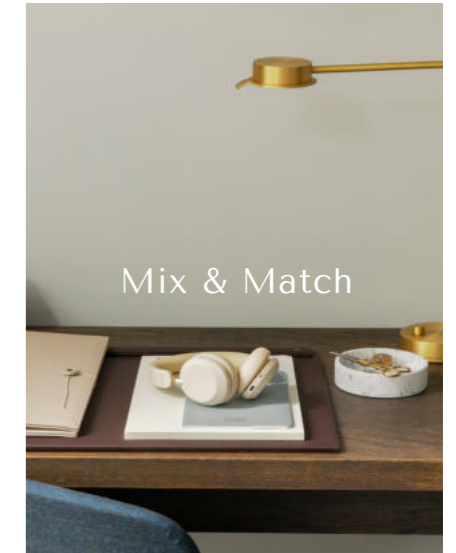
# COLLECTIONS



New Classic



Natural



Mix & Match

Three inspiring collections that give you the opportunity to complement the room in just the right way. Add your personal touch, choose for the New Classic, the Natural or the Mix & Match collection and create a unique atmosphere.



THE STORY

## NEW CLASSIC COLLECTION

The New Classic collection is focused on the business guest with an authentic taste and eye for detail. The luxurious and classic design and the use of refined materials will make the established business traveler feel at home. Items are functional and easy in use in order to accommodate a pleasant stay.



THE STORY

## NATURAL COLLECTION

The Natural collection is developed for the mindful and conscious leisure traveler. The use of natural light colours and the organic design make this collection fit well to beach resorts and nature (boutique) hotels. The items contribute to a feeling of comfort and relaxation when enjoying a well-deserved holiday.

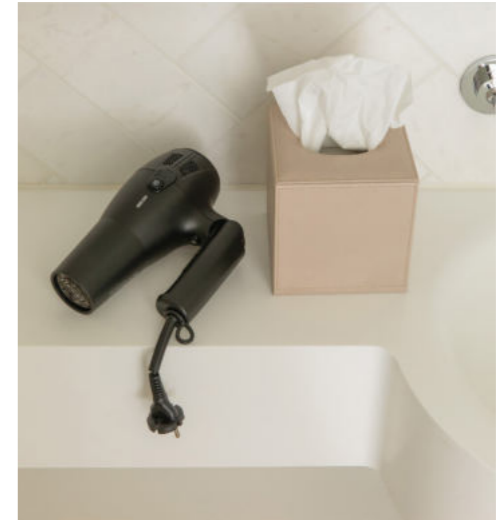


A FEW EXAMPLES OF  
THE NATURAL ITEMS

THE STORY

## MIX & MATCH COLLECTION

The different elements of our collections are designed to be mixed and matched in order to create unique combination which fit to the specific design of your hotel room. We like to inspire you to create your own look & feel by combining our items with each other in a way that suits you best.



A FEW EXAMPLES OF  
THE MIX & MATCH ITEMS

we think of ——— everything

**Bentley**



**Bentley Europe BV**

Wethouder Venteweg 92 D  
2805 JR Gouda  
The Netherlands

[info@bentleyeurope.com](mailto:info@bentleyeurope.com)  
[www.bentleyeurope.com](http://www.bentleyeurope.com)  
+31 (0)182 58 14 42

